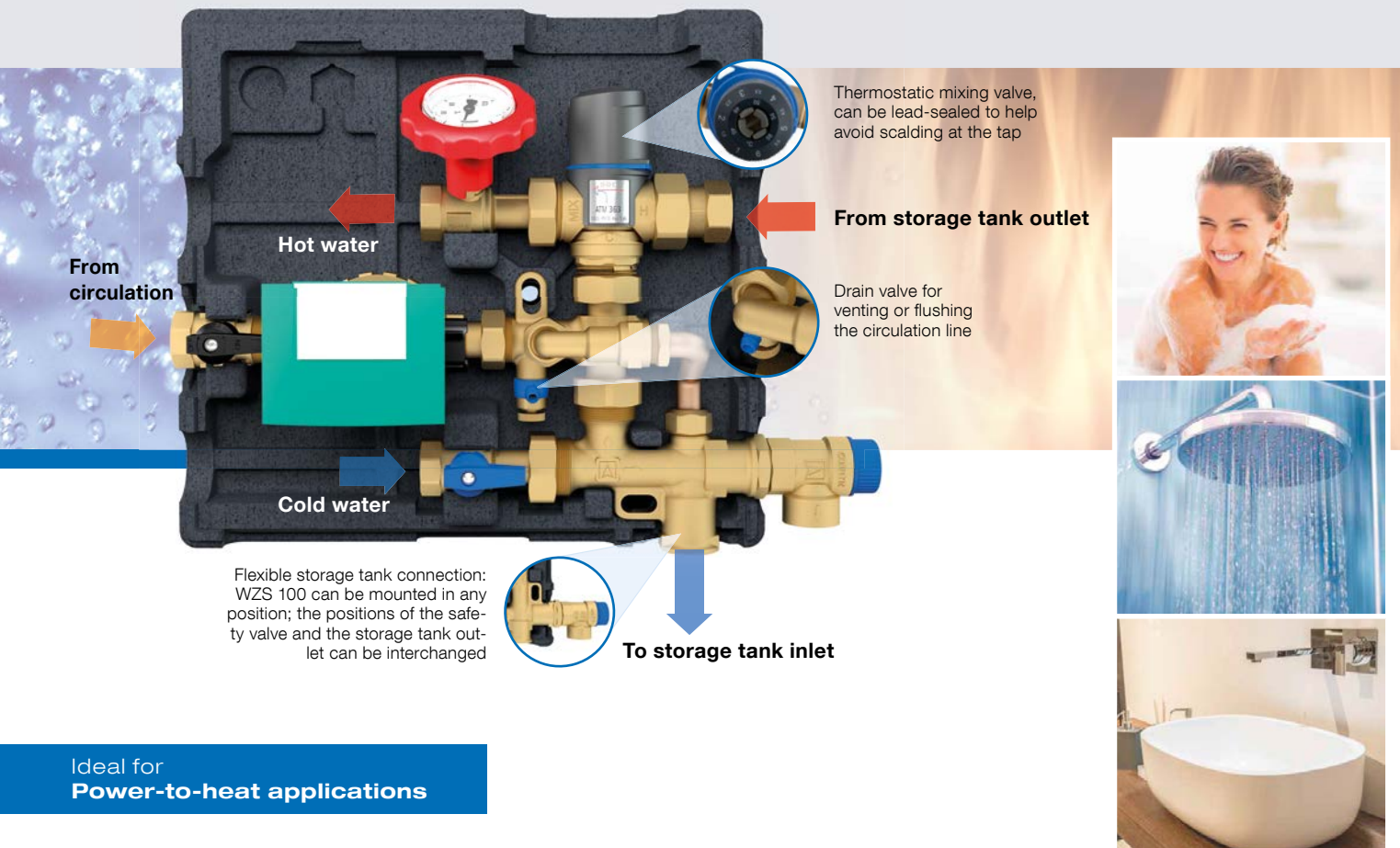


Hot water circulation system

Hydraulic assembly for easy connection to solar, hot water, hygienic or combination storage tanks



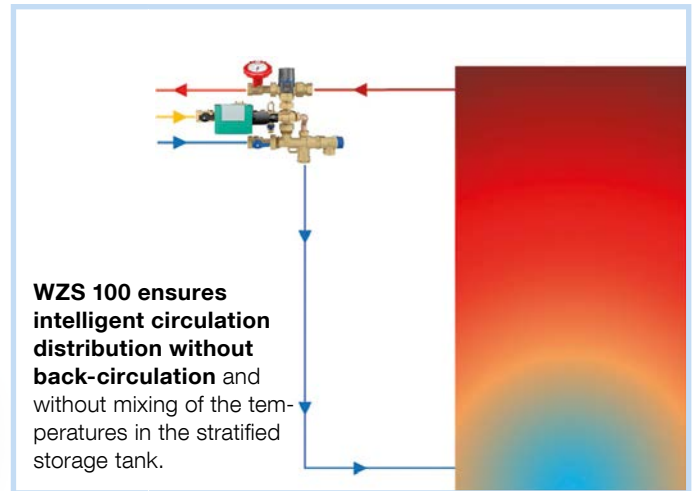
Advantages - your benefits

- + High energy savings as a result of intelligent circulation distribution as compared to conventional systems
- + Can also be used for power-to-heat applications in conjunction with heat pumps or hybrid systems
- + Everything included: Drinking water safety group assembly, WILO circulation pump, thermostatic mixing valve, shut-off ball valves, backflow preventer, heat insulation
- + Reliability right from the beginning: No incorrect installation with forgotten components
- + Pre-assembled and tightness-tested assembly for minimum installation effort and rapid commissioning
- + Thermally controlled hot water temperature (with scald protection)
- + Sophisticated fastening concept with all accessories for wall mounting

A SINGLE assembly instead of connecting up to 30 components



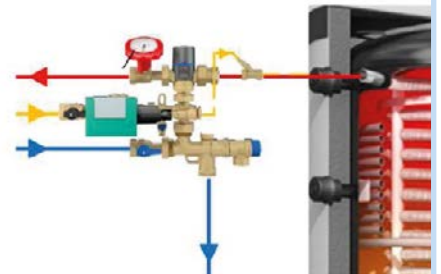
Backflow preventer



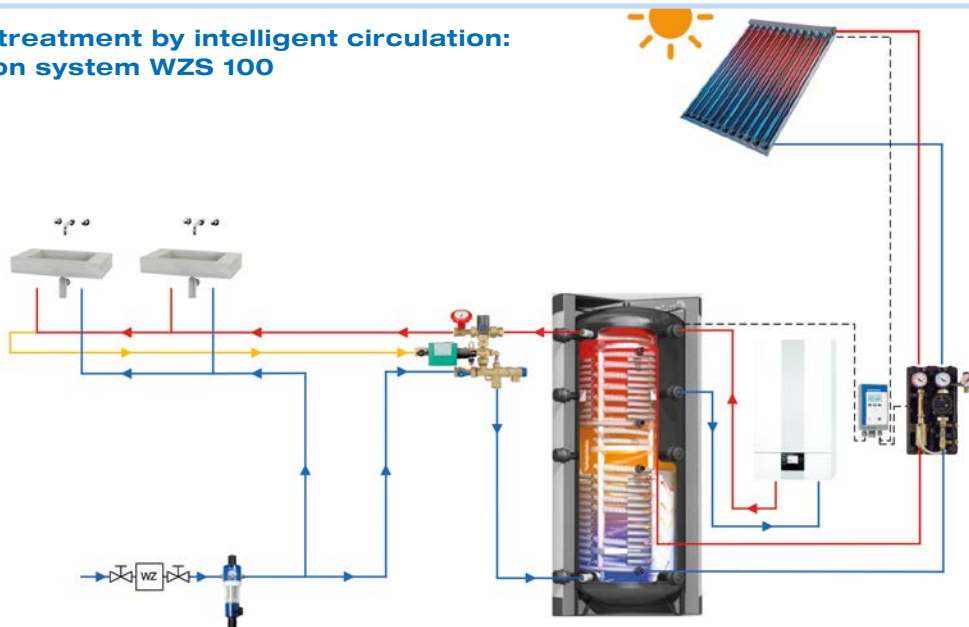
Operation with circulation lance for increased comfort and energy savings



Circulation lance ZL 2 ensures optimum operation of the stratified storage tank by supplying the returning hot water to the upper layer of the water heater.



Efficient hot water treatment by intelligent circulation: Hot water circulation system WZS 100



Version

Hot water circulation system WZS 100

Circulation lance ZL 2

Thermostatic mixing valve ATM 363 WSG with integrated drinking water safety group assembly for applications without circulation

Part no.

68405

68406

68419



Technology for Environmental Protection

Measuring. Controlling. Monitoring.



AFRISO