

Safety temperature cut outs STB With capillary tube



Benefits

- Ideal for heating and process industries
- For protection against exceeding the maximum temperature
- No external power supply
- Manual reset

Application

There are many application areas for safety temperature cut outs in the heating and process industries. In conventional oil-fired or gas-fired boilers, these devices are used to monitor the boiler water. The safety temperature cut outs feature a manual reset button which must be actuated for unlocking.

Description

If the temperature at the probe increases, the measuring liquid in the measuring system expands. If the temperature exceeds a critical value, the device triggers, the voltage-free contact switches and the system is set to a defined safe state. When the temperature has decreased by approx. 15 K, the device can be unlocked and the system resumes operation.

Technical specifications

Type

LS1

Switching point

See ordering table

Tolerance

+0 K/-6 K at 20 °C

Influence of ambient temperature

0.25 °C/°C

Switching differential

ΔT 15 \pm 8 K

Fail safe

Yes

Probe

Copper

Ø 6.5 x 95 mm

Probe element

Liquid-filled

Operating temperature range

Probe: Max. 125 °C

Housing: Max. 85 °C

Capillary tube

Cu capillary tube with

PVC coating, black

Length: 1,000, 1,500 mm

Degree of protection

IP 00 (EN 60529)

Time constant

DIN-tested

DIN EN

14597:2012-09

Registration number: TR/STB 1211

Electrical switching contact

Changeover contact

Contact rating

NC: AC 250 V, 16 (2.5) A

NO: AC 250 V, 0.5 A

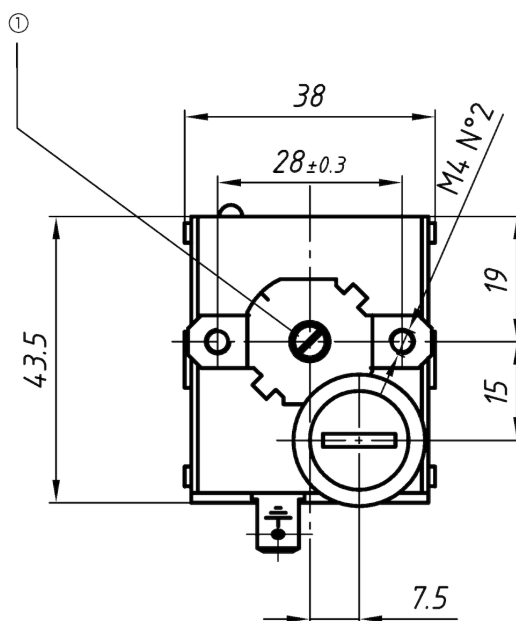


Options

- Other operating ranges
- Other capillary tube lengths
- Customised versions

Detail views

STB - housing dimensions



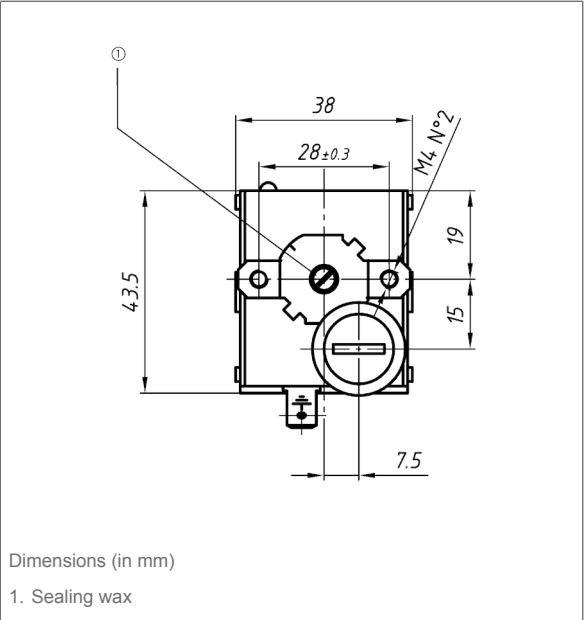
Dimensions (in mm)

1. Sealing wax

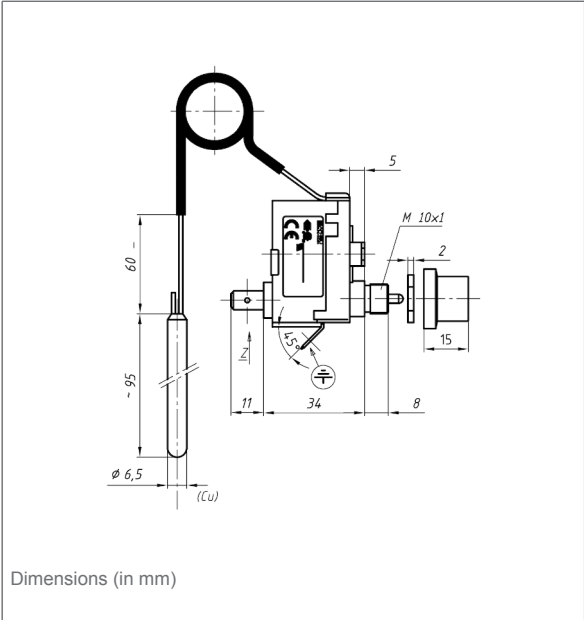


Technical drawings

STB - housing dimensions



STB - housing and probe dimensions



Versions

	Contact	Switching point	Capillary length	Part no.
Safety temperature cut outs STB LS1/971 F1	–	100 °C	1,000 mm	67273X
Safety temperature cut outs STB LS1/971 FU	Changeover contact	100 °C	1,000 mm	67276X
Safety temperature cut outs STB LS1/971 FU	Changeover contact	100 °C	1,500 mm	67277X
Safety temperature cut outs STB LS1/971 F1	–	110 °C	1,500 mm	67288X
Safety temperature cut outs STB LS1/971 FU	Changeover contact	75 °C	1,500 mm	67585X

Blue part no. = in-stock items