



## Diaphragm seal MD 81 Tubus flange version



### Benefits

- For tanks with thick walls
- For higher block flanges and increased insulation
- Connection as per DIN or ASME
- Tubus length can be adapted as required

### Application

For mounting to Bourdon tube pressure gauges, pressure transducers or pressure switches. For corrosive, highly viscous, polluted, crystallising or hot media. Ideal for insulated or thick-walled tanks. Specially designed for use in the chemical and petrochemical industries, in refineries or power plant engineering.

### Versions

#### flange connection as per ASME B 16.5 (Raised Face)

	Process connection	Instrument connection	Nominal pressure	Minimum range* (in bar) at nominal size					Part no.
				63	100	160	DMU	DMU 13 Vario	
	1"	Welded connection	CL 150	4 bar	4 bar	–	1 bar		31938W
	2"	Welded connection	CL 150	1 bar	2.5 bar	–	1 bar	On request	31929W
	3"	Welded connection	CL 150	0.6 bar	0.6 bar	1 bar	1 bar	On request	31931W

Blue part no. = in-stock items

#### flange connection as per EN 1092-1 type B 1

	Process connection	Instrument connection	Nominal pressure	Minimum range* (in bar) at nominal size					Part no.
				63	100	160	DMU	DMU 13 Vario	
	DN 50	Welded connection	PN 40	1 bar	2.5 bar	–	1 bar	On request	31917W
	DN 80	Welded connection	PN 40	0.6 bar	0.6 bar	1 bar	1 bar	On request	31921W
	DN 100	Welded connection	PN 40	0.6 bar	0.6 bar	1 bar	1 bar	On request	31924W

Blue part no. = in-stock items



## Technical specifications

### Process connection/tubus

Stainless steel 316 L

Flange connection

as per ASME B 16.5

(Raised Face) or as

per EN 1092-1 type B

1

Tubus length: 50 mm

### Diaphragm

Stainless steel 316 L

Welded

### Sealing surface

Stainless steel 316 L

### Instrument connection

Welded connection

### Pressure transmission liquid

Paraffin oil (FM 09), FDA-listed

### Pressure range

See overview of versions

### Nominal pressure

CL 150, PN 40

## Options

### Process connection

- Other tubus lengths
- Special materials/coatings
- Other sealing surfaces

### Diaphragm

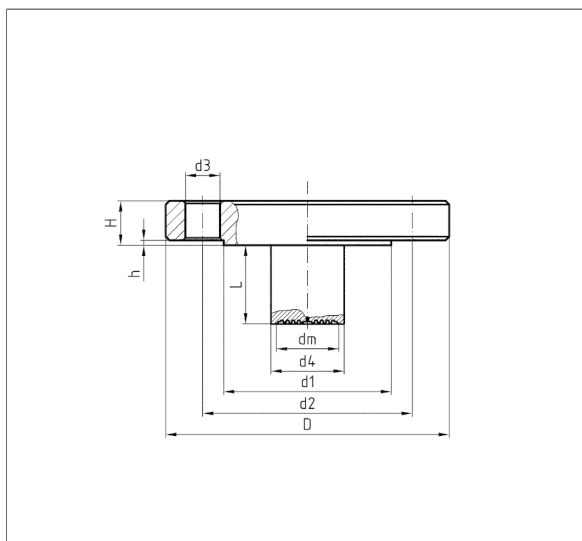
- Special materials: Hastelloy, Monel, nickel, Inconel, Incoloy, platinum, titanium, tantalum, zirconium, other chrome-nickel-steel alloys
- Coatings/linings: PFA (up to 250 °C), ECTFE (up to 150 °C), PTFE (up to 150 °C, up to 100 bar), silver (up to 150 °C), gold (up to 200 °C)

### Other

- Adapter for instrument connection G $\frac{1}{4}$ B/G $\frac{1}{2}$ B
- Capillary tube (back or bottom)
- Cooling element (> 100 °C)
- Other filling liquids
- Customer-specific flanges
- Other nominal diameters

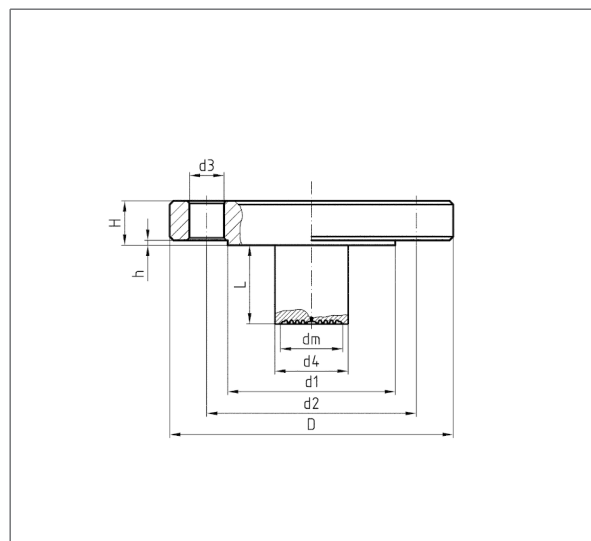
## Technical drawings

Type MD 81 – flange connection as per ASME B 16.5



DN	CL	D	d1	d2	d3	d4	H	h
1"	150	108	51	79,5	4x16	25	14,5	1,5
2"	150	152	92	121	4x19	48	19	1,5
3"	150	190	127	152	4x19	76	24	1,5

Type MD 81 – flange connection as per EN 1092-1 type B 1



DN	PN	D	d1	d2	d3	d4	H	h
50	40	165	102	125	4x18	48	20	3
80	40	200	138	160	8x18	76	24	3
100	40	235	162	190	8x22	94	24	3

