



Magnetic piston pressure gauges for differential pressure - high overload protection



Benefits

- Compact and robust stainless steel measuring system
- Max. static pressure PN 100, 250, 400
- Leak-proof due to mechanical separation of pressure chamber and display
- Various connection types
- Easy retrofitting of electrical contacts without intervention in the measuring system

Application

For differential pressure measurements at very high static pressures. For gaseous and liquid, non-adhesive media that are not highly viscous. Particularly suitable for monitoring filters, pumps, pipe systems and cooling circuits.

Technical specifications

Type

MAG80Dif D312
MAG100Dif D312

Nominal size

80 – 100

Accuracy

± 3 % of full scale value
(at increasing differential pressure)

Ranges (EN 837-3/5)

See ordering table

Maximum static pressure

100 bar

Overpressure safety

Up to the maximum static pressure at both ends

Operating temperature range

Medium: Max. 80 °C
Ambient: 0/80 °C

Degree of protection

IP 65 (EN 60529)

Standard version

Connection (wetted part)

Stainless steel 316, on left and right sides, opposite each other

Connection cover

Plastic, glass-fibre reinforced, black

Measuring element (wetted part)

Compression spring, Stainless steel 301

Magnetic piston (wetted part)

Stainless steel 316/strontium ferrite

Seal (wetted part)

NBR (Perbunan)

Dial

Aluminium, white
Dual scale (bar/psi)
Scaling black/red
Scale angle 90°

Pointer

Aluminium, black

Housing

Stainless steel 304, with rubber sealing ring at the front

Window

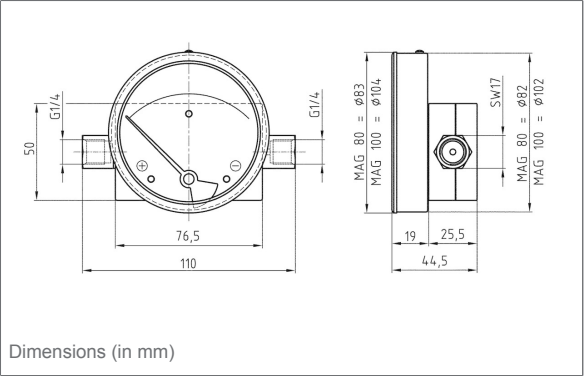
Instrument glass

Options

- Mounting plate with fixing clamp
- 3-hole fixing, panel mounting bezel
- Max. static pressure PN 250/400
- Other connection threads
- Other connection designs
- Window acrylic glass
- Electrical contacts (Reed contacts)
- Filter in "plus" connection
- Glycerine filling
- Maximum pointer
- Special scales


Technical drawings

Lateral connection, right and left




Versions

MAG80Dif D312

	Housing ø	Housing	Connection	Range	Type	Part no.
	80 mm	Stainless steel 304	2 x G1/4 female thread	0/0.25 bar	MAG80Dif D312	88002312
	80 mm	Stainless steel 304	2 x G1/4 female thread	0/0.4 bar	MAG80Dif D312	88003312
	80 mm	Stainless steel 304	2 x G1/4 female thread	0/0.6 bar	MAG80Dif D312	88004312
	80 mm	Stainless steel 304	2 x G1/4 female thread	0/1 bar	MAG80Dif D312	88005312
	80 mm	Stainless steel 304	2 x G1/4 female thread	0/1.6 bar	MAG80Dif D312	88006312
	80 mm	Stainless steel 304	2 x G1/4 female thread	0/2.5 bar	MAG80Dif D312	88007312
	80 mm	Stainless steel 304	2 x G1/4 female thread	0/4 bar	MAG80Dif D312	88008312
	80 mm	Stainless steel 304	2 x G1/4 female thread	0/6 bar	MAG80Dif D312	88009312
	80 mm	Stainless steel 304	2 x G1/4 female thread	0/10 bar	MAG80Dif D312	88010312

Blue part no. = in-stock items

MAG100Dif D312

	Housing ^ø	Housing	Connection	Range	Type	Part no.
	100 mm	Stainless steel 304	2 x G¼ female thread	0/0.25 bar	MAG100Dif D312	88013312
	100 mm	Stainless steel 304	2 x G¼ female thread	0/0.4 bar	MAG100Dif D312	88014312
	100 mm	Stainless steel 304	2 x G¼ female thread	0/0.6 bar	MAG100Dif D312	88015312
	100 mm	Stainless steel 304	2 x G¼ female thread	0/1 bar	MAG100Dif D312	88016312
	100 mm	Stainless steel 304	2 x G¼ female thread	0/1.6 bar	MAG100Dif D312	88017312
	100 mm	Stainless steel 304	2 x G¼ female thread	0/2.5 bar	MAG100Dif D312	88018312
	100 mm	Stainless steel 304	2 x G¼ female thread	0/4 bar	MAG100Dif D312	88019312
	100 mm	Stainless steel 304	2 x G¼ female thread	0/6 bar	MAG100Dif D312	88020312
	100 mm	Stainless steel 304	2 x G¼ female thread	0/10 bar	MAG100Dif D312	88021312

Blue part no. = in-stock items